



**BEGIN**

# Educator Toolkit

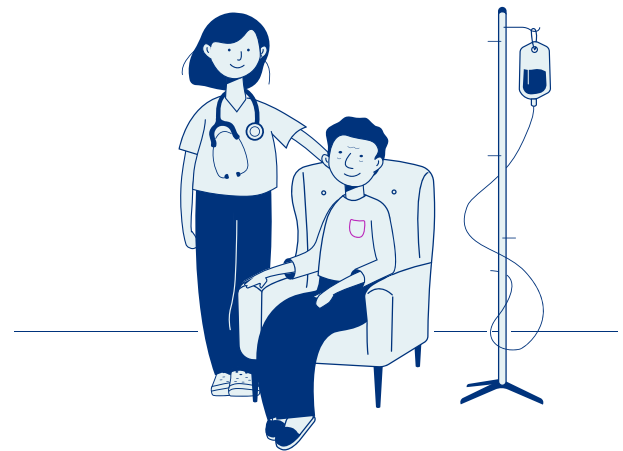
## The Bridging Educational Grant in Nursing

The Registered Practical Nurses Association of Ontario (WeRPN) is the voice of Ontario's 60,000+ Registered Practical Nurses. Since the organization was founded in 1958, WeRPN has championed the critical role of RPNs by unifying their members, listening to their needs and advocating on their behalf with government, community stakeholders and the general public.

The Bridging Educational Grant in Nursing (BEGIN) program was created by WeRPN in partnership with the Ontario Government. As part of a commitment to recruit nurses to Long-Term Care, Home and Community Care, Primary Care, and Hospital sectors<sup>1</sup>, BEGIN helps Personal Support Workers (PSWs) and Registered Practical Nurses (RPNs) grow their careers.

Eligible Ontario PSWs and RPNs studying to become RPNs and RNs can access BEGIN education grants to reimburse their tuition and mandatory ancillary fees<sup>2</sup>.

After completing the last semester of their nursing program, participants agree to commit to work full-time or 1500 part time hours in one of these four priority sectors for every academic year or portion of a year for which BEGIN funding was received.



<sup>1</sup> Spaces are limited. Apply now  
<sup>2</sup> Up to yearly maximum amount

The BEGIN Program is a Partnership Between

## BEGIN Tuition Grants

### Benefits to students:

- Tuition reimbursement grants
- Free exam preparation resources
- Post-graduation job search support
- Meaningful career opportunities in Ontario's Long-Term Care, Home and Community Care, Primary Care, or Hospital sectors

### How much can students be reimbursed?

#### Eligible PSW-RPN students

Up to \$6,000 per year in tuition and mandatory ancillary fee reimbursements (maximum of \$15,000)

#### Eligible RPN-RN/PSW-RN students

Up to \$10,000 per year in tuition and mandatory ancillary fee reimbursements (maximum of \$30,000)

### What's covered?

BEGIN provides funding for tuition and mandatory ancillary fees up to the maximum amount per year.

### Is additional financial assistance available?

Some applicants may also qualify for additional funding of up to \$5,000 per year to help with costs such as tutoring, travel, and caring for dependents. All BEGIN participants are eligible to apply, but only those with demonstrated financial need will qualify.

### What happens following program completion?

After completing the last semester of their nursing program, participants agree to commit to work full-time or 1500 part time hours in one of these four priority sectors for every academic year or portion of a year for which BEGIN funding was received.

### Does BEGIN impact OSAP funding?

BEGIN is a tuition reimbursement grant, which may impact the level of OSAP funding a student receives. Unlike a loan, students do not need to pay back BEGIN tuition reimbursement grants as long as they graduate and fulfill their Return of Service.

To understand how tuition grants could inform OSAP funding, use the self-directed OSAP aid estimator [here](#). We suggest completing the form without tuition grants listed and then completing a second form with your anticipated BEGIN tuition reimbursement amount for comparison.

*\*Students must complete their education by March 31, 2026.*

## How BEGIN Supports Students

### Provides funding to help nursing students expand their careers

BEGIN provides Ontario PSWs and RPNs with tuition reimbursement grants to explore new pathways in nursing and expand their careers. Eligible Ontario PSWs and RPNs studying to become RPNs and RNs may be eligible to receive funding they don't need to pay back, reducing financial barriers for students to invest in their futures. Once enrolled, additional funding may be available for participants who demonstrate need or require tutoring support.

### Exam preparation resources

Participants also benefit from additional resources and are paired with a dedicated case manager to support them on their program journey, and NCLEX and REx-PN exam preparation resources.

### Secure career opportunities

Students who receive BEGIN funding commit to post-graduation employment in Ontario's Long-Term Care, Home and Community Care, Primary Care, and Hospital sectors. After completing the last semester of their nursing program, participants agree to commit to work full-time or 1500 part time hours in one of these four priority sectors for every academic year or portion of a year for which BEGIN funding was received.\* BEGIN helps connect graduates with meaningful employment opportunities in a rewarding and in-demand field.

### Job search support

To aid with their job search, BEGIN participants will have access to a new graduate workshop that includes resume writing tips and interviewing skills, as well as a dedicated job board with career opportunities in Ontario's Long-Term Care, Home and Community Care, Primary Care, and Hospital sectors

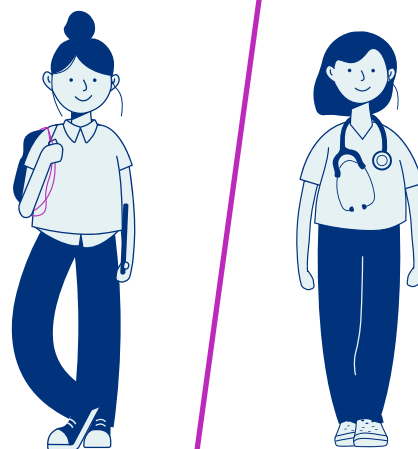
### Helpful Links and Resources

Want to know more?

You can find some further Q&As on the BEGIN website [here](#).

Still have questions? Reach out at

[info@begin.werpn.com](mailto:info@begin.werpn.com)



\*NOTE Staffing agencies are not eligible employers.